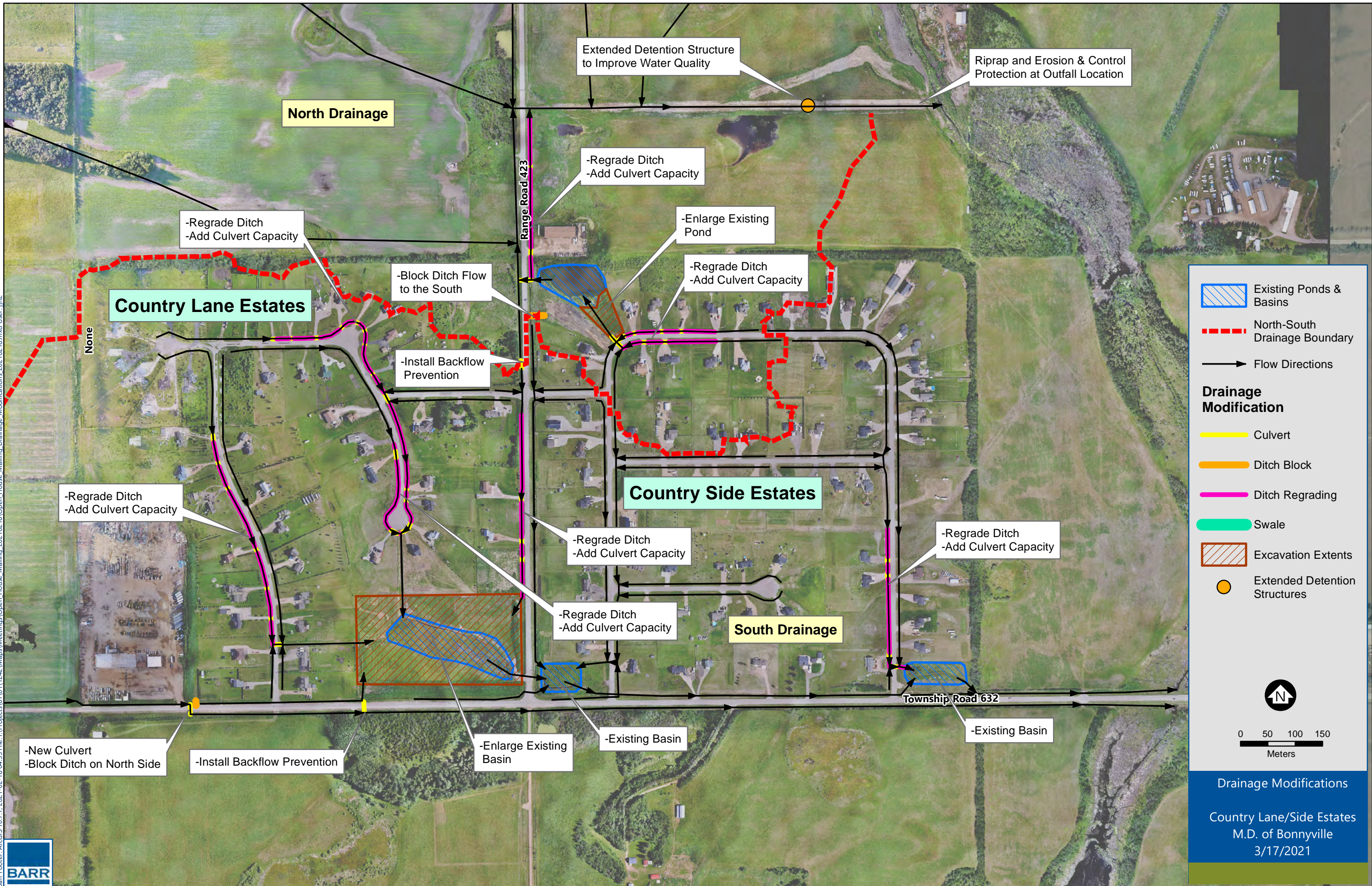


Barr Footer: ArcGIS 10.7.1, 2021-02-18 04:33 File: I:\Projects\61011\1242\Maps\Meetings\Open_House_Mailing_20210218\Open_House_Mailing_Drainage_Modifications_20210218.mxd User: jhb2



North Drainage

Country Lane Estates

Country Side Estates

South Drainage

Extended Detention Structure to Improve Water Quality

Riprap and Erosion & Control Protection at Outfall Location

-Regrade Ditch
-Add Culvert Capacity

-Enlarge Existing Pond

-Regrade Ditch
-Add Culvert Capacity

-Regrade Ditch
-Add Culvert Capacity

-Block Ditch Flow to the South

-Install Backflow Prevention

-Regrade Ditch
-Add Culvert Capacity

-Regrade Ditch
-Add Culvert Capacity

-Regrade Ditch
-Add Culvert Capacity

-Regrade Ditch
-Add Culvert Capacity

-New Culvert
-Block Ditch on North Side

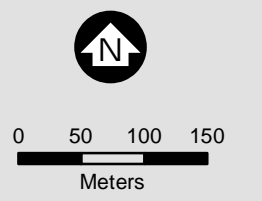
-Install Backflow Prevention

-Enlarge Existing Basin

-Existing Basin

-Existing Basin

- Existing Ponds & Basins
- North-South Drainage Boundary
- Flow Directions
- Drainage Modification**
 - Culvert
 - Ditch Block
 - Ditch Regrading
 - Swale
 - Excavation Extents
 - Extended Detention Structures



Drainage Modifications

Country Lane/Side Estates
M.D. of Bonnyville
3/17/2021

