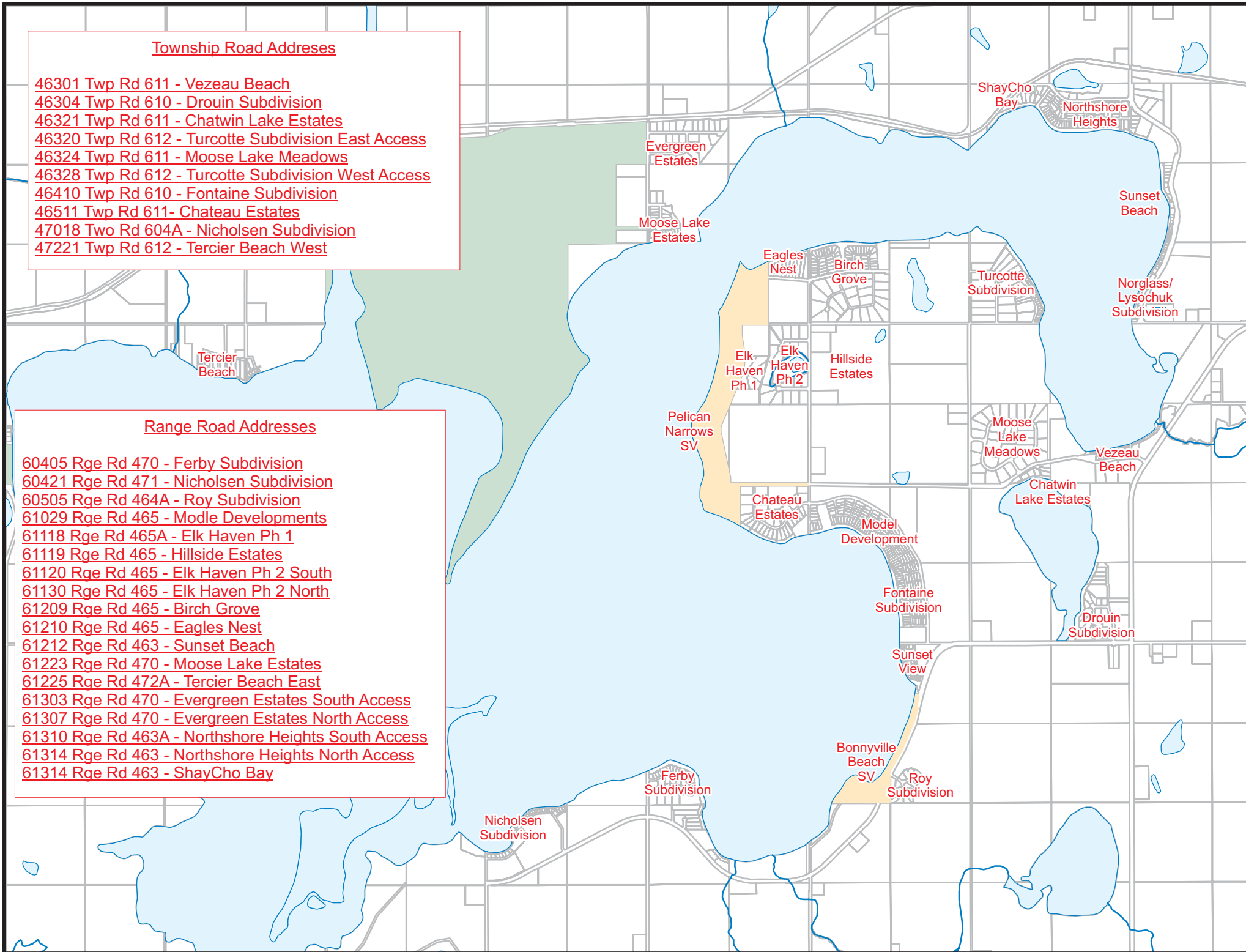


Township Road Addresses

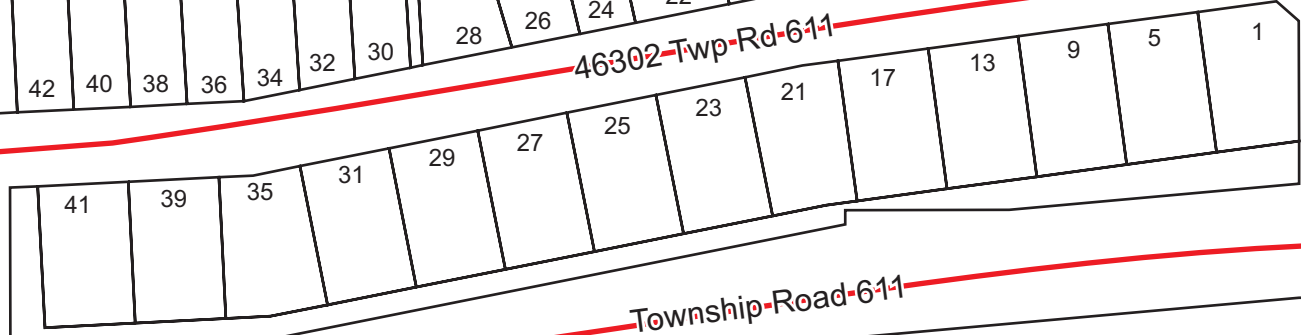
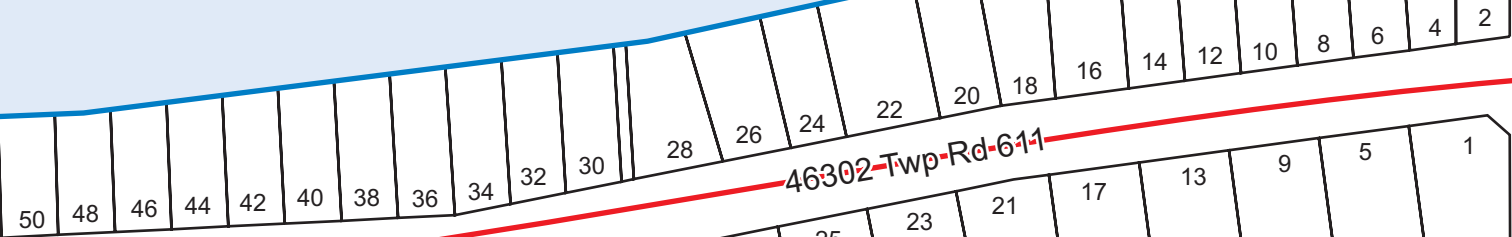
- 46301 Twp Rd 611 - Vezeau Beach
- 46304 Twp Rd 610 - Drouin Subdivision
- 46321 Twp Rd 611 - Chatwin Lake Estates
- 46320 Twp Rd 612 - Turcotte Subdivision East Access
- 46324 Twp Rd 611 - Moose Lake Meadows
- 46328 Twp Rd 612 - Turcotte Subdivision West Access
- 46410 Twp Rd 610 - Fontaine Subdivision
- 46511 Twp Rd 611- Chateau Estates
- 47018 Two Rd 604A - NicholSEN Subdivision
- 47221 Twp Rd 612 - Tercier Beach West

Range Road Addresses

- 60405 Rge Rd 470 - Ferby Subdivision
- 60421 Rge Rd 471 - NicholSEN Subdivision
- 60505 Rge Rd 464A - Roy Subdivision
- 61029 Rge Rd 465 - Modle Developments
- 61118 Rge Rd 465A - Elk Haven Ph 1
- 61119 Rge Rd 465 - Hillside Estates
- 61120 Rge Rd 465 - Elk Haven Ph 2 South
- 61130 Rge Rd 465 - Elk Haven Ph 2 North
- 61209 Rge Rd 465 - Birch Grove
- 61210 Rge Rd 465 - Eagles Nest
- 61212 Rge Rd 463 - Sunset Beach
- 61223 Rge Rd 470 - Moose Lake Estates
- 61225 Rge Rd 472A - Tercier Beach East
- 61303 Rge Rd 470 - Evergreen Estates South Access
- 61307 Rge Rd 470 - Evergreen Estates North Access
- 61310 Rge Rd 463A - Northshore Heights South Access
- 61314 Rge Rd 463 - Northshore Heights North Access
- 61314 Rge Rd 463 - ShayCho Bay



Moose Lake

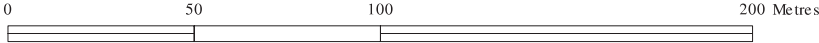


46303 Twp Rd 611
Bonnyville Golf & Country Club

46307 Twp Rd 611

46305 Twp Rd 611

VEZEAU BEACH SUBDIVISION



Disclaimer
 This map should not be used for navigational, tracking or any other purpose requiring exacting measurement of distance or direction or precision in the depiction of geographic features. This map document is made available by the Municipal District of Bonnyville No. 87 is not a legally recorded map nor survey and are not intended to be used as such. This map document was created as part of a Geographic Information System (GIS) that compiles records, information, and data from various city, county, province and federal sources. The source data may contain errors.



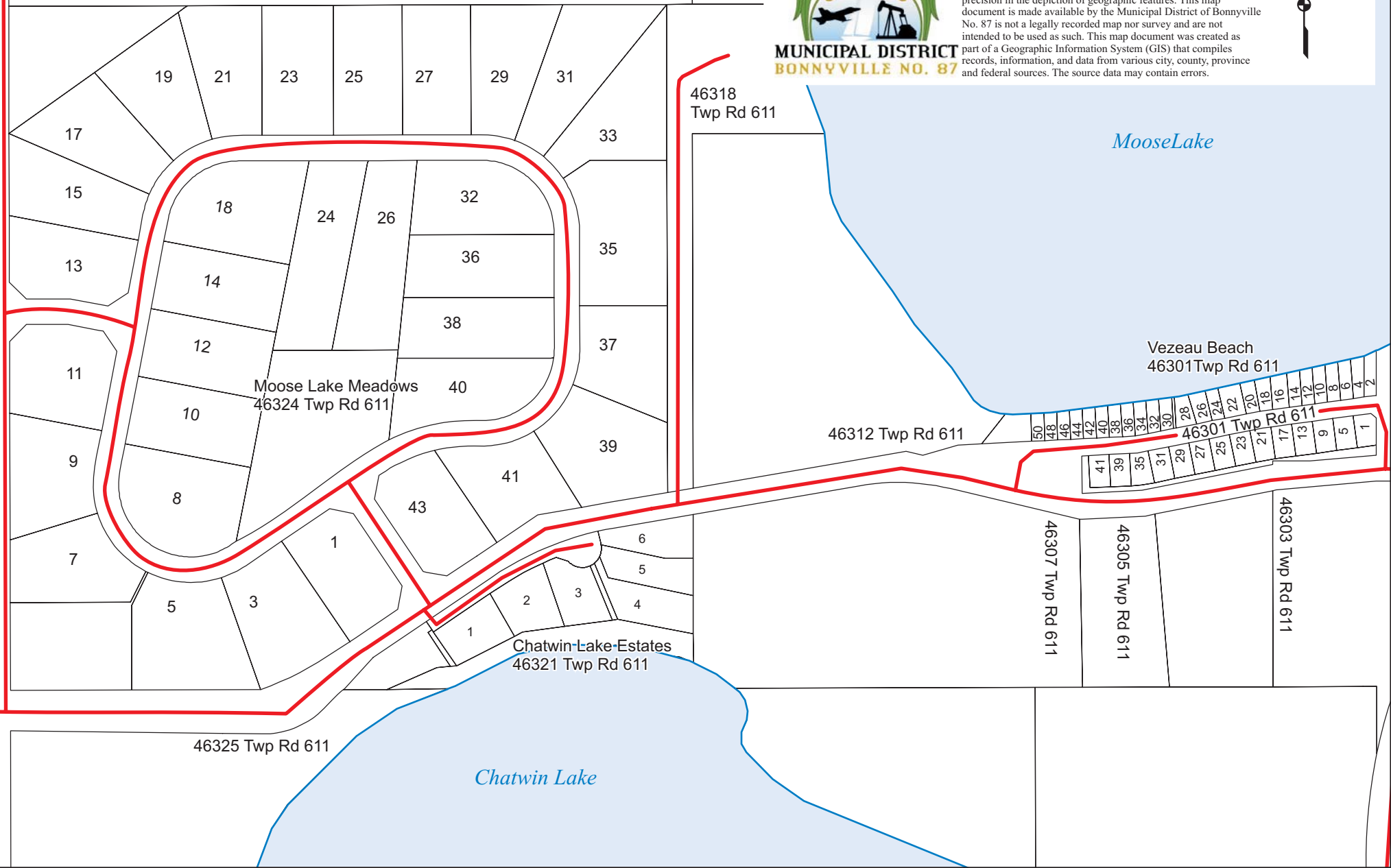
MOOSE LAKE MEADOWS, CHATWIN LAKE ESTATES, AND VESEAU BEACH

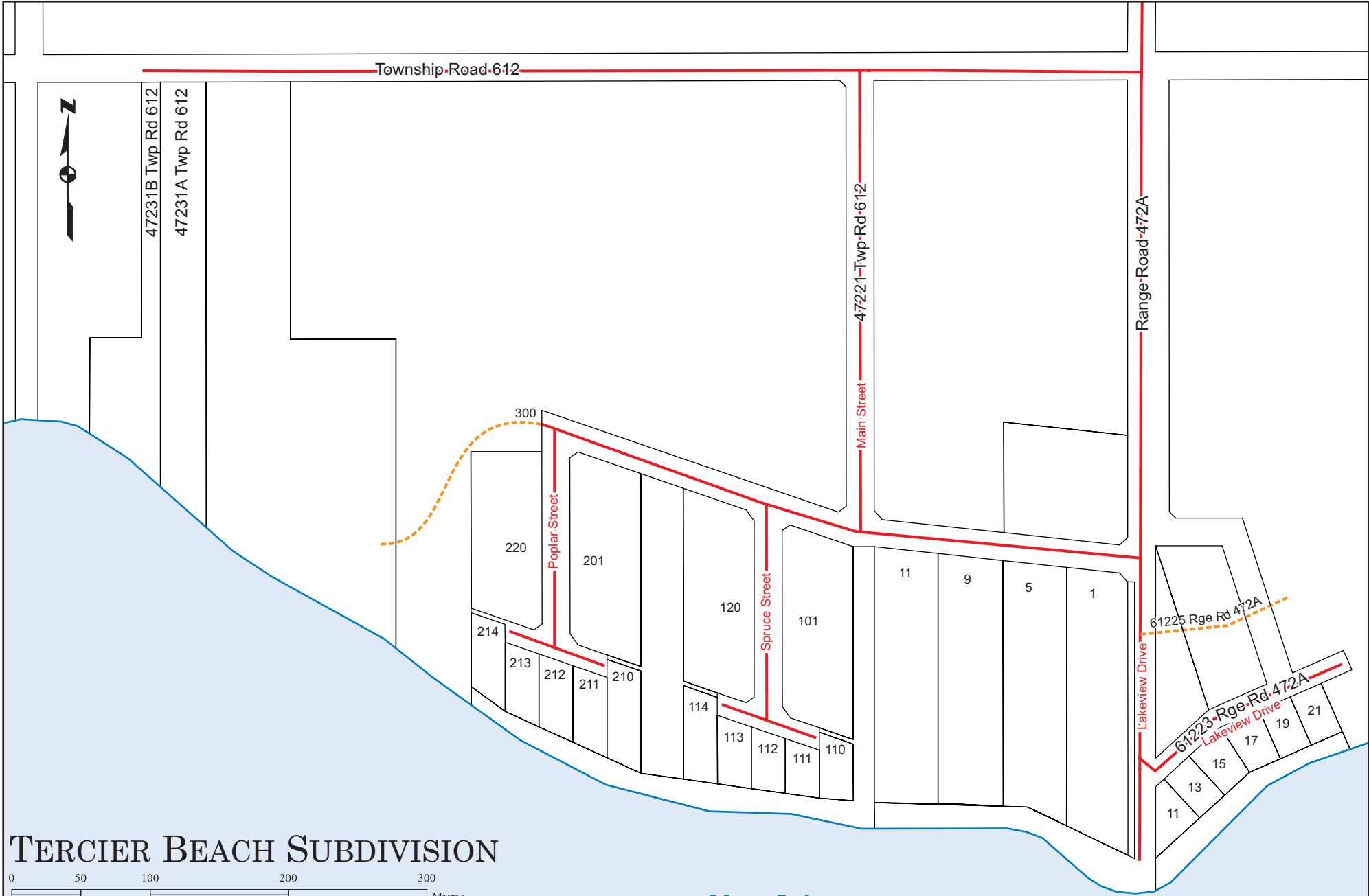
0 50 100 200 300 400 Metres



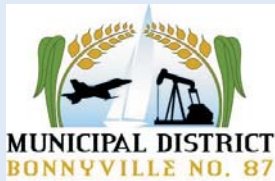
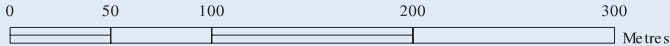
MUNICIPAL DISTRICT
BONNYVILLE NO. 87

Disclaimer
This map should not be used for navigational, tracking or any other purpose requiring exacting measurement of distance or direction or precision in the depiction of geographic features. This map document is made available by the Municipal District of Bonnyville No. 87 is not a legally recorded map nor survey and are not intended to be used as such. This map document was created as part of a Geographic Information System (GIS) that compiles records, information, and data from various city, county, province and federal sources. The source data may contain errors.





TERCIER BEACH SUBDIVISION



Disclaimer
 This map should not be used for navigational, tracking or any other purpose requiring exacting measurement of distance or direction or precision in the depiction of geographic features. This map document is made available by the Municipal District of Bonnyville No. 87 is not a legally recorded map nor survey and are not intended to be used as such. This map document was created as part of a Geographic Information System (GIS) that compiles records, information, and data from various city, county, province and federal sources. The source data may contain errors.

Moose Lake

Moose Lake

61215 Rge Rd 463

14

13

12A

12

11

10

9

8

7

6

5

4

3

2

1

61210
Rge Rd 463

61208B
Rge Rd 463

61208A
Rge Rd 463

61204B
Rge Rd 463

61204A
Rge Rd 463

61202B
Rge Rd 463

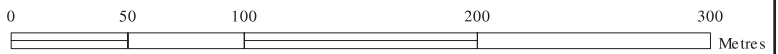
61202A
Rge Rd 463

61212 Rge Rd 463

Range Road 463

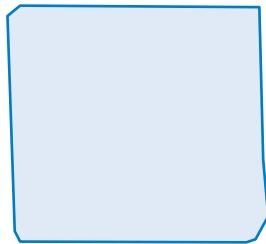
Range Road 463

SUNSET BEACH - SOUTH AND NORGLASS-LYSOCHUK SUBDIVISIONS



MUNICIPAL DISTRICT
BONNYVILLE NO. 87

Disclaimer
This map should not be used for navigational, tracking or any other purpose requiring exacting measurement of distance or direction or precision in the depiction of geographic features. This map document is made available by the Municipal District of Bonnyville No. 87 is not a legally recorded map nor survey and are not intended to be used as such. This map document was created as part of a Geographic Information System (GIS) that compiles records, information, and data from various city, county, province and federal sources. The source data may contain errors.

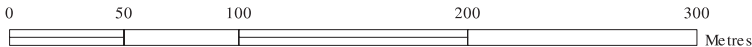


46228 Twp Rd 612

46218B Twp Rd 612

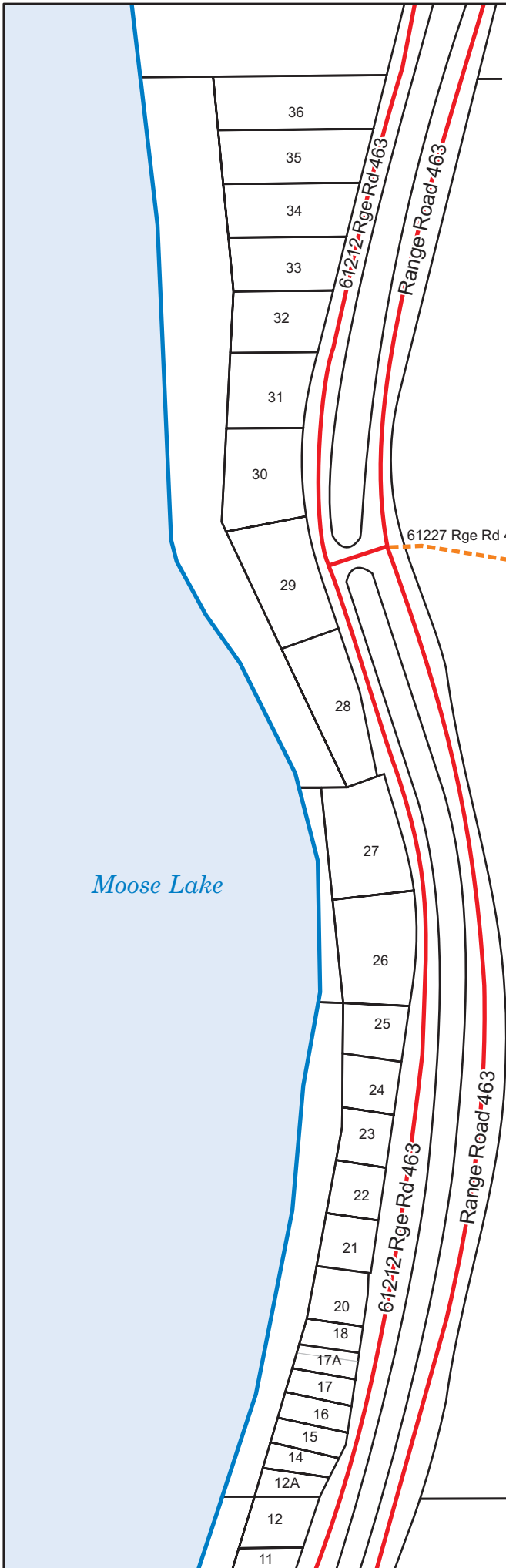
Township Road 612

SUNSET BEACH SUBDIVISION- NORTH



MUNICIPAL DISTRICT
BONNYVILLE NO. 87

Disclaimer
This map should not be used for navigational, tracking or any other purpose requiring exacting measurement of distance or direction or precision in the depiction of geographic features. This map document is made available by the Municipal District of Bonnyville No. 87 is not a legally recorded map nor survey and are not intended to be used as such. This map document was created as part of a Geographic Information System (GIS) that compiles records, information, and data from various city, county, province and federal sources. The source data may contain errors.



MOOSE LAKE SUNSET VIEW

0 50 100 200 Metres



MUNICIPAL DISTRICT
BONNYVILLE NO. 87

Disclaimer
This map should not be used for navigational, tracking or any other purpose requiring exacting measurement of distance or direction or precision in the depiction of geographic features. This map document is made available by the Municipal District of Bonnyville No. 87 is not a legally recorded map nor survey and are not intended to be used as such. This map document was created as part of a Geographic Information System (GIS) that compiles records, information, and data from various city, county, province and federal sources. The source data may contain errors.



Township Road 610

Park Avenue

60528-Rge-Rd-464A

Lakeshore Ave

Antler Drive

60528-Rge-Rd-464A

Range Road 464A

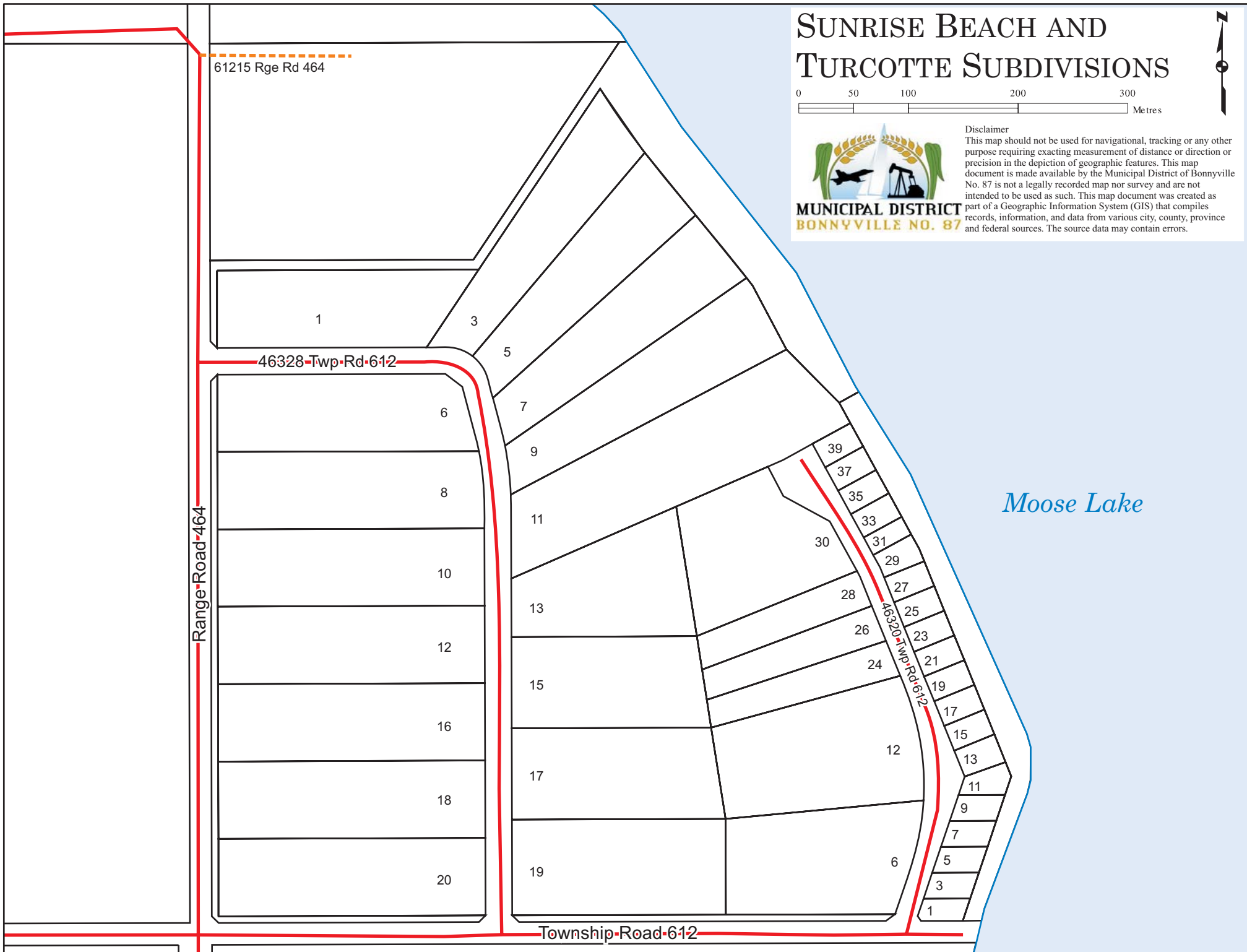
Moose Lake



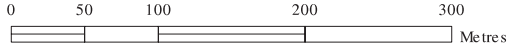
SUNRISE BEACH AND TURCOTTE SUBDIVISIONS



Disclaimer
This map should not be used for navigational, tracking or any other purpose requiring exacting measurement of distance or direction or precision in the depiction of geographic features. This map document is made available by the Municipal District of Bonnyville No. 87 is not a legally recorded map nor survey and are not intended to be used as such. This map document was created as part of a Geographic Information System (GIS) that compiles records, information, and data from various city, county, province and federal sources. The source data may contain errors.



NORTHSHORE HEIGHTS AND SHAYCHO BAY SUBDIVISIONS

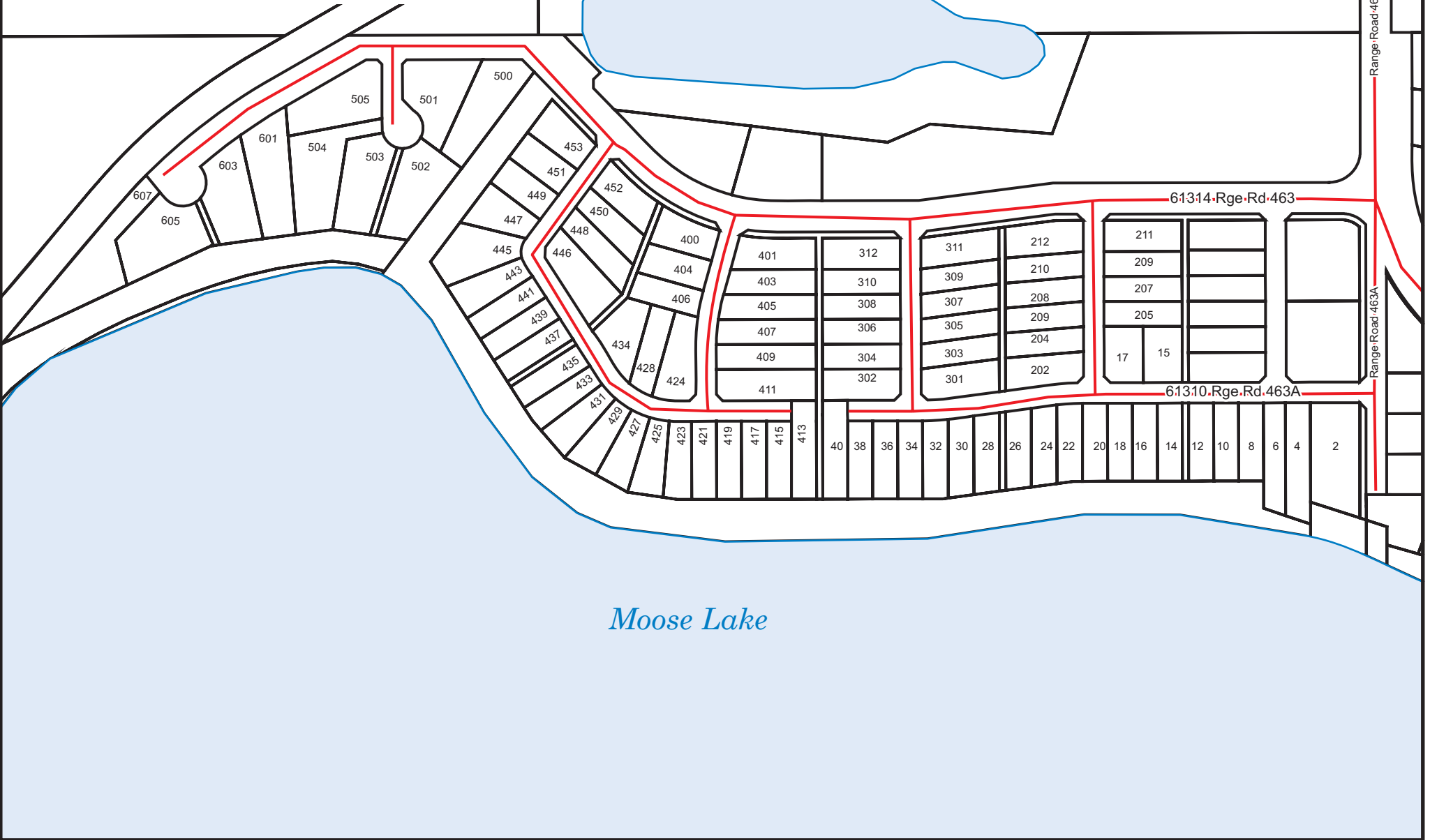


Disclaimer

This map should not be used for navigational, tracking or any other purpose requiring exacting measurement of distance or direction or precision in the depiction of geographic features. This map document is made available by the Municipal District of Bonnyville No. 87 is not a legally recorded map nor survey and are not intended to be used as such. This map document was created as part of a Geographic Information System (GIS) that compiles records, information, and data from various city, county, province and federal sources. The source data may contain errors.



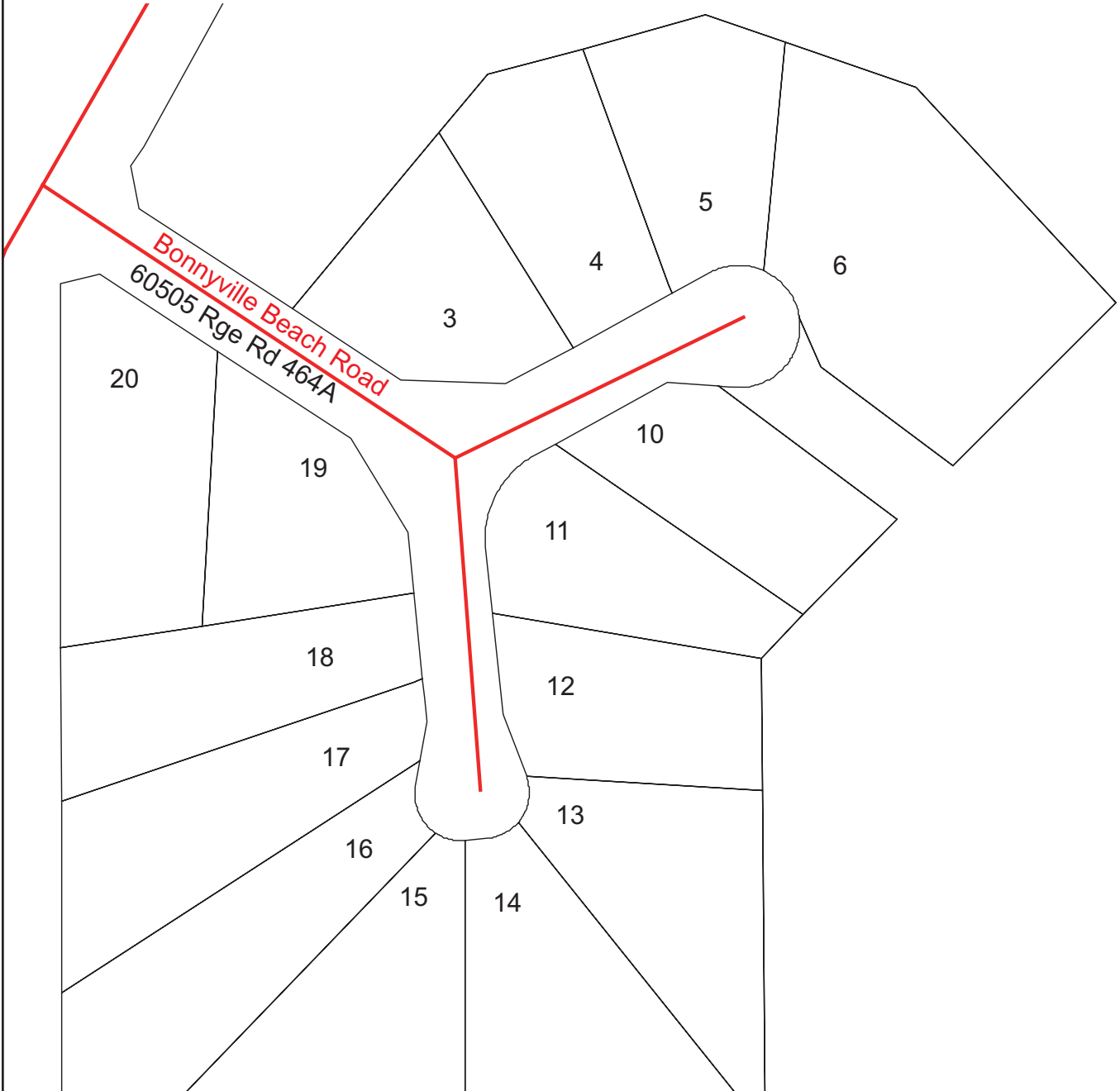
**MUNICIPAL DISTRICT
BONNYVILLE NO. 87**

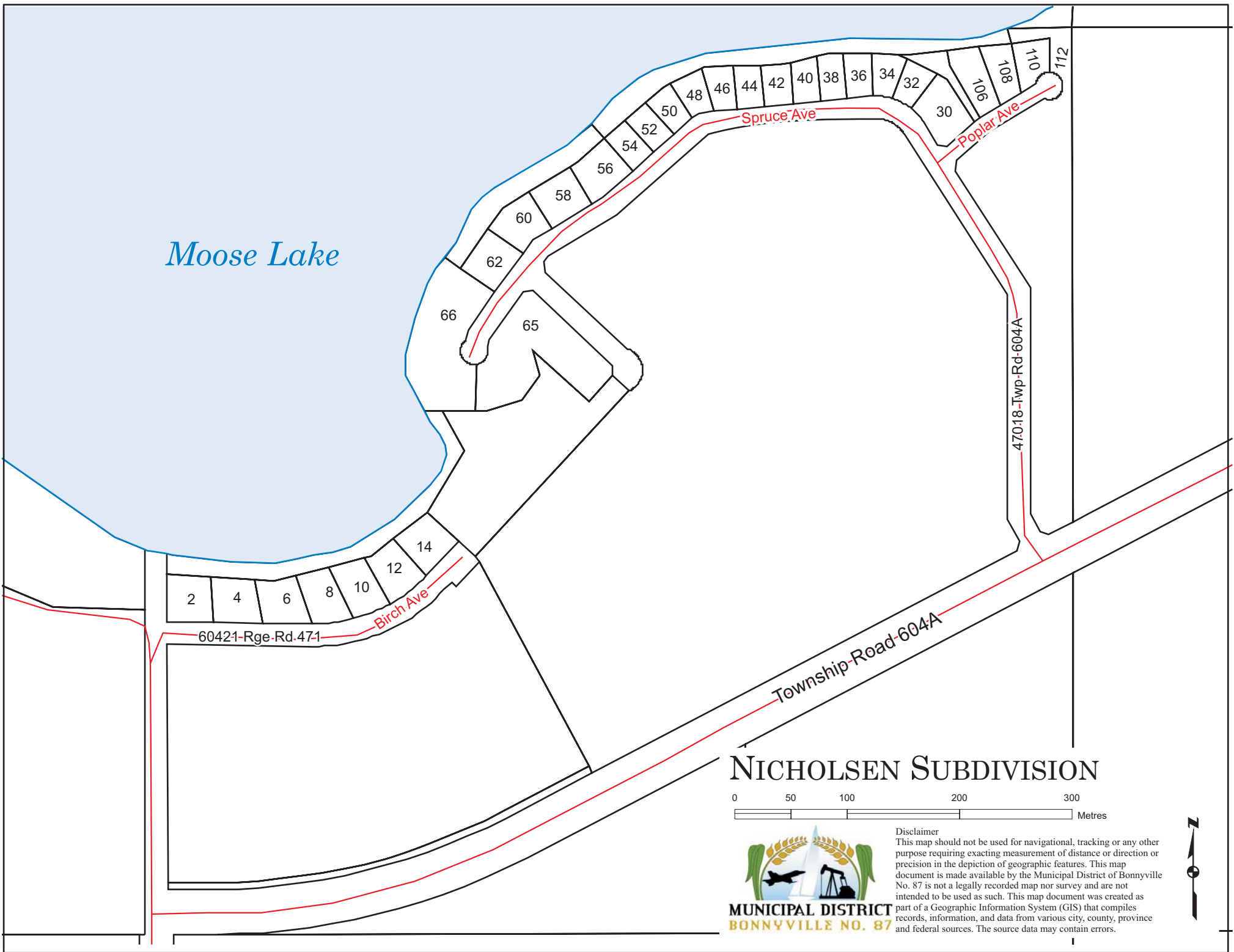


ROY SUBDIVISION



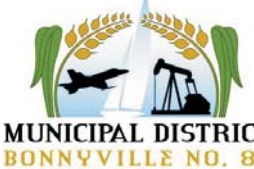
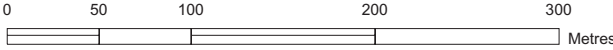
Disclaimer
This map should not be used for navigational, tracking or any other purpose requiring exacting measurement of distance or direction or precision in the depiction of geographic features. This map document is made available by the Municipal District of Bonnyville No. 87 is not a legally recorded map nor survey and are not intended to be used as such. This map document was created as part of a Geographic Information System (GIS) that compiles records, information, and data from various city, county, province and federal sources. The source data may contain errors.





Moose Lake

NICHOLSEN SUBDIVISION



Disclaimer
 This map should not be used for navigational, tracking or any other purpose requiring exacting measurement of distance or direction or precision in the depiction of geographic features. This map document is made available by the Municipal District of Bonnyville No. 87 is not a legally recorded map nor survey and are not intended to be used as such. This map document was created as part of a Geographic Information System (GIS) that compiles records, information, and data from various city, county, province and federal sources. The source data may contain errors.



MOOSE LAKE ESTATES SUBDIVISION

0 50 100 200 Metres



**MUNICIPAL DISTRICT
BONNYVILLE NO. 87**

Disclaimer
This map should not be used for navigational, tracking or any other purpose requiring exacting measurement of distance or direction or precision in the depiction of geographic features. This map document is made available by the Municipal District of Bonnyville No. 87 is not a legally recorded map nor survey and are not intended to be used as such. This map document was created as part of a Geographic Information System (GIS) that compiles records, information, and data from various city, county, province and federal sources. The source data may contain errors.



2

4

61223-Rge-Rd-470

3

13

15

17

19

21

23

61217 Rge Rd 470

27

29

31

33

35

37

39

41

12

12

14

16

18

20

40

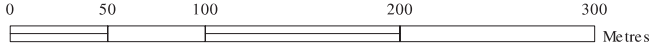
Woodland Road

Woodland Road

Range-Road-470

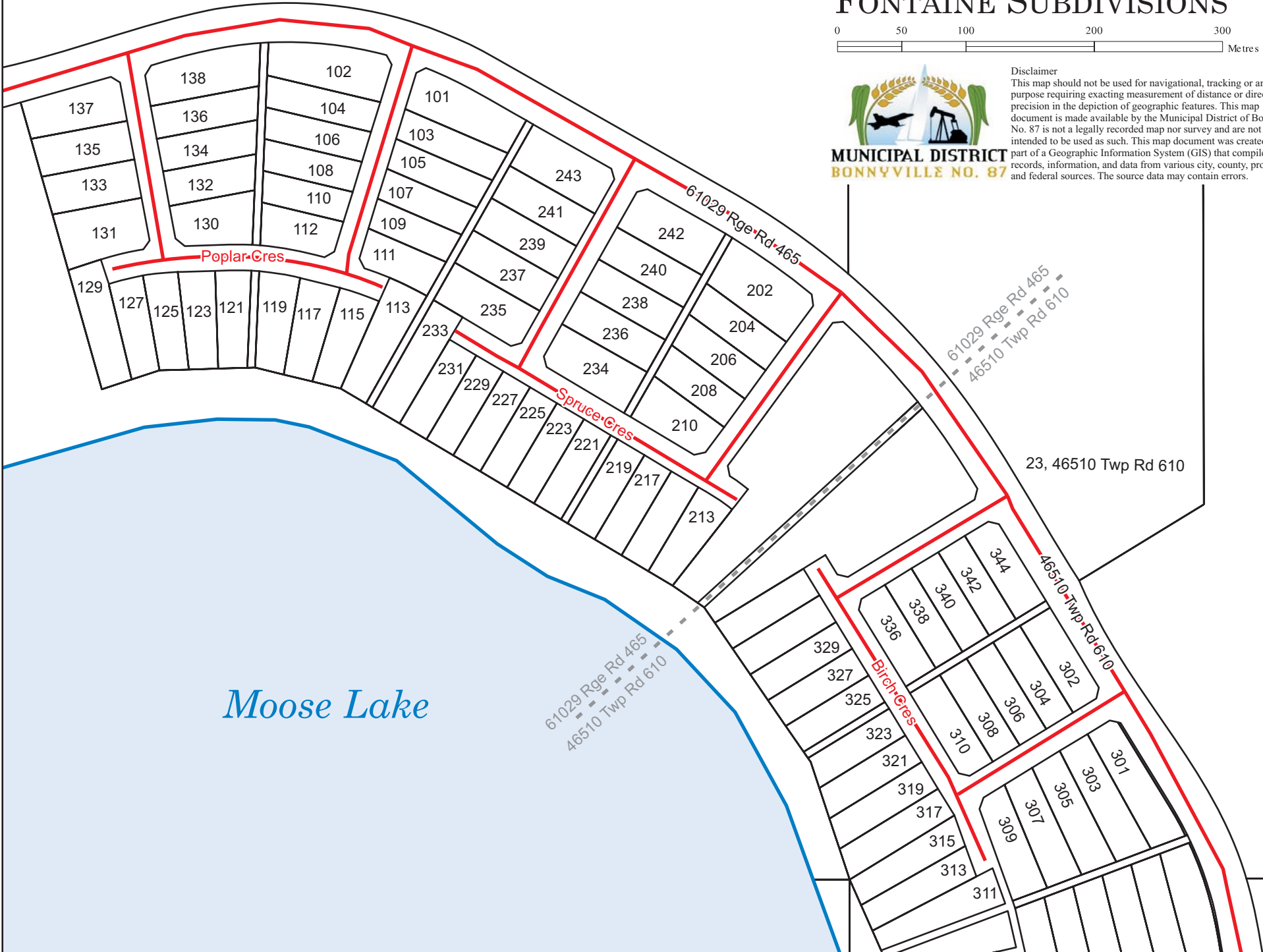
Moose Lake

MODEL DEVELOPMENTS AND FONTAINE SUBDIVISIONS

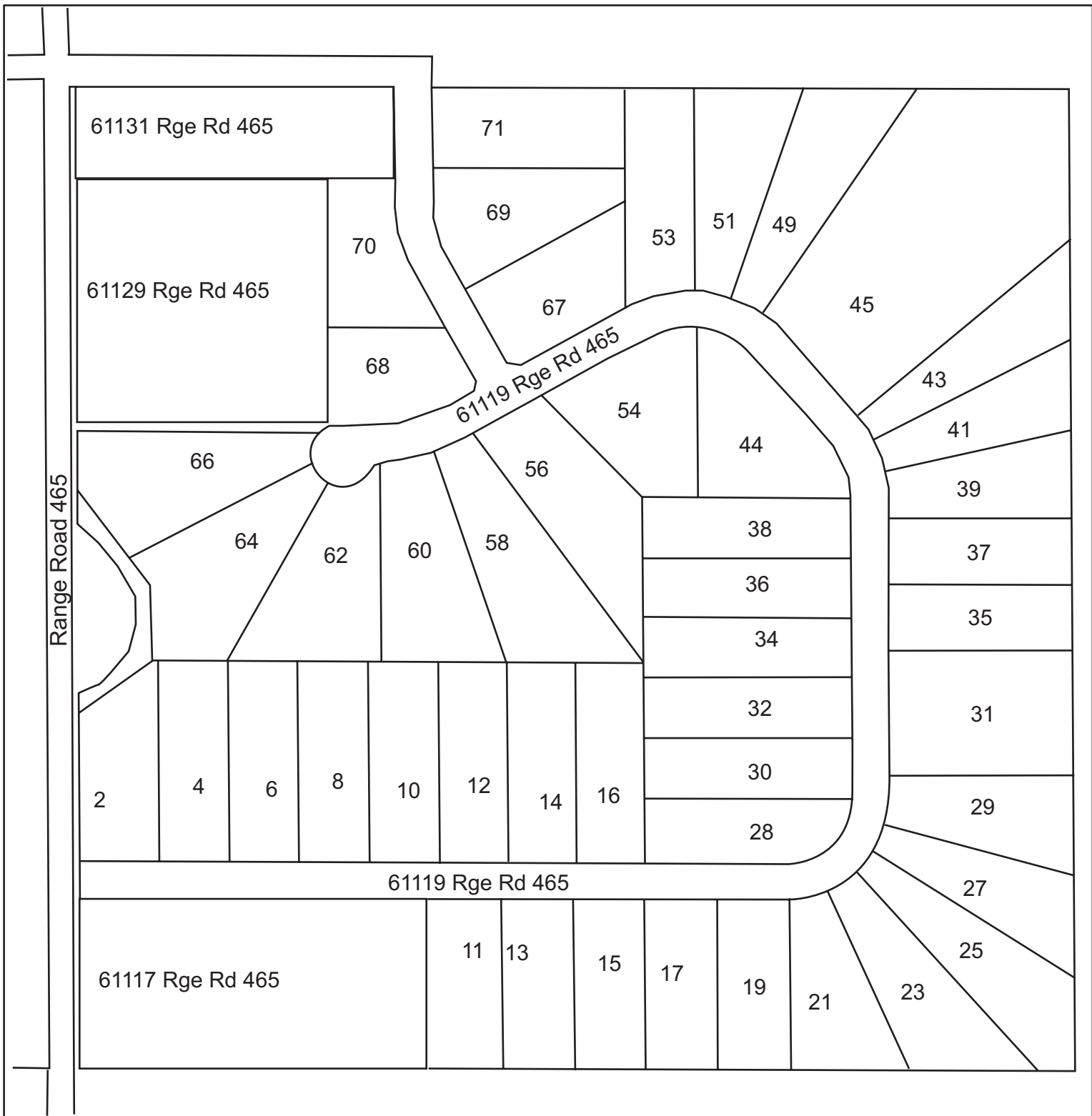


**MUNICIPAL DISTRICT
BONNYVILLE NO. 87**

Disclaimer
This map should not be used for navigational, tracking or any other purpose requiring exacting measurement of distance or direction or precision in the depiction of geographic features. This map document is made available by the Municipal District of Bonnyville No. 87 is not a legally recorded map nor survey and are not intended to be used as such. This map document was created as part of a Geographic Information System (GIS) that compiles records, information, and data from various city, county, province and federal sources. The source data may contain errors.



Moose Lake



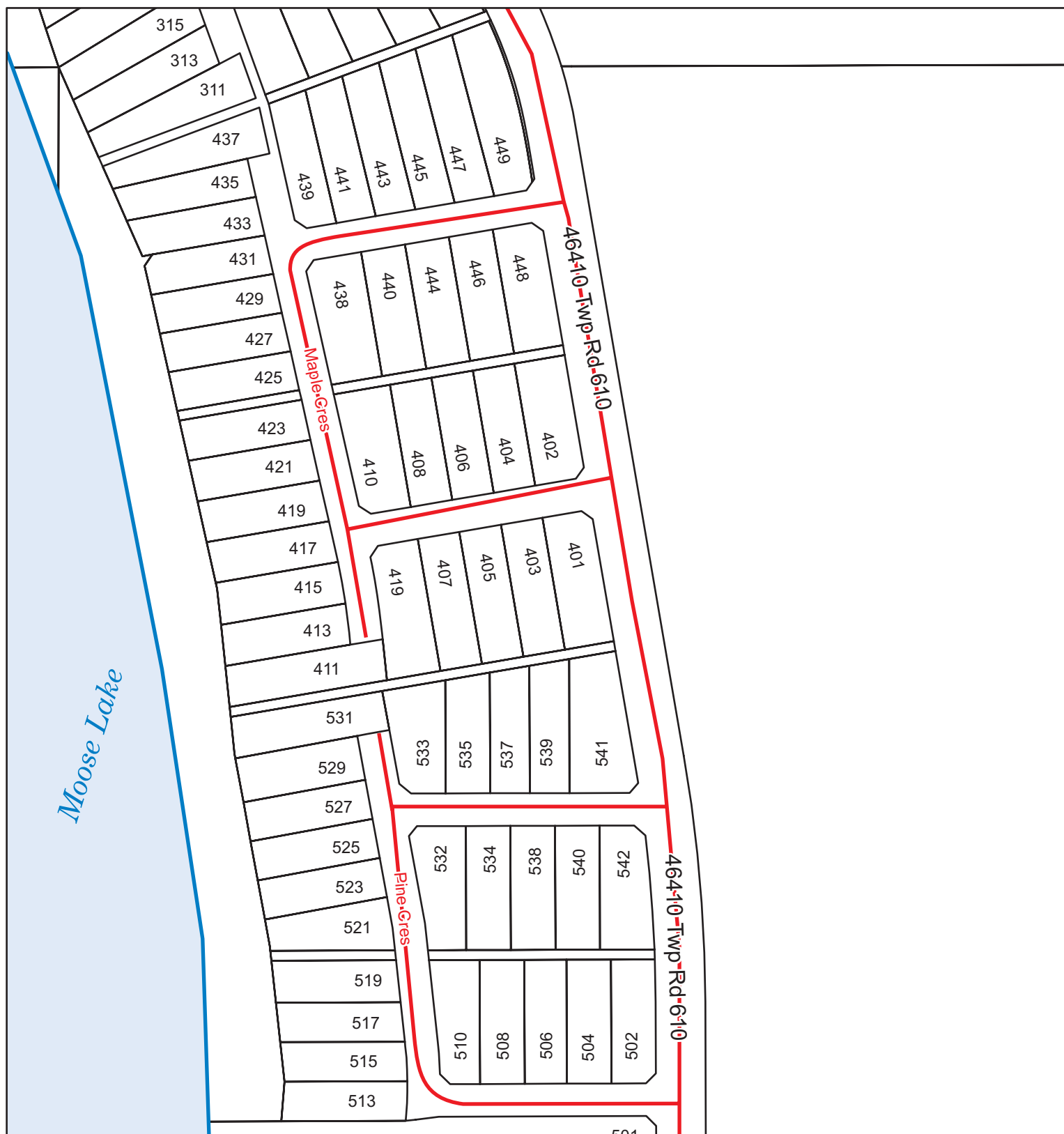
HILLSIDE ESTATES



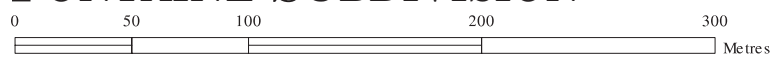
Disclaimer
This map should not be used for navigational, tracking or any other purpose requiring exacting measurement of distance or direction or precision in the depiction of geographic features. This map document is made available by the Municipal District of Bonnyville No. 87 is not a legally recorded map nor survey and are not intended to be used as such. This map document was created as part of a Geographic Information System (GIS) that compiles records, information, and data from various city, county, province and federal sources. The source data may contain errors.



Moose Lake



FONTAINE SUBDIVISION

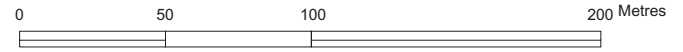


Disclaimer
This map should not be used for navigational, tracking or any other purpose requiring exacting measurement of distance or direction or precision in the depiction of geographic features. This map document is made available by the Municipal District of Bonnyville No. 87 is not a legally recorded map nor survey and are not intended to be used as such. This map document was created as part of a Geographic Information System (GIS) that compiles records, information, and data from various city, county, province and federal sources. The source data may contain errors.



Township-Road-600

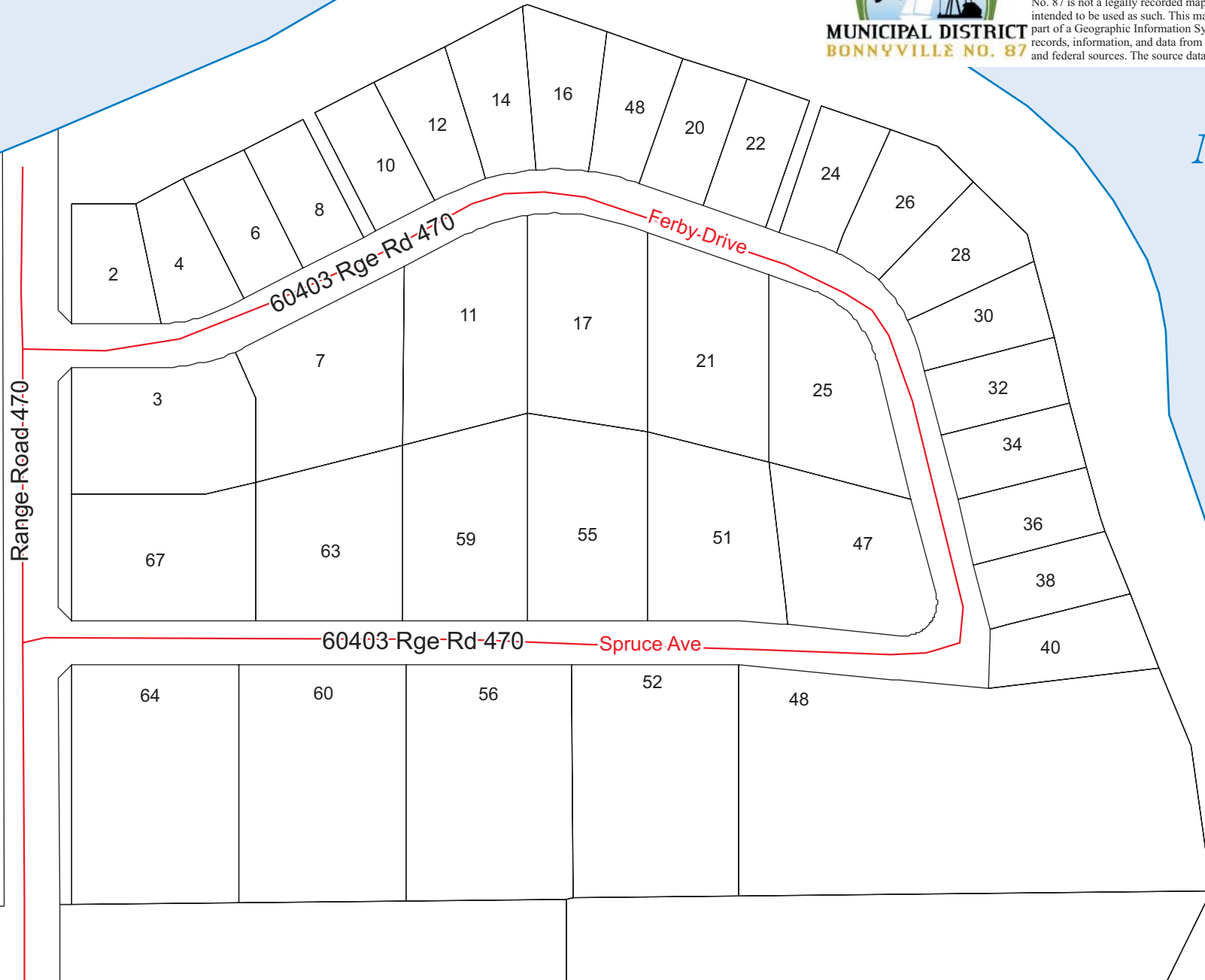
FERBY SUBDIVISION



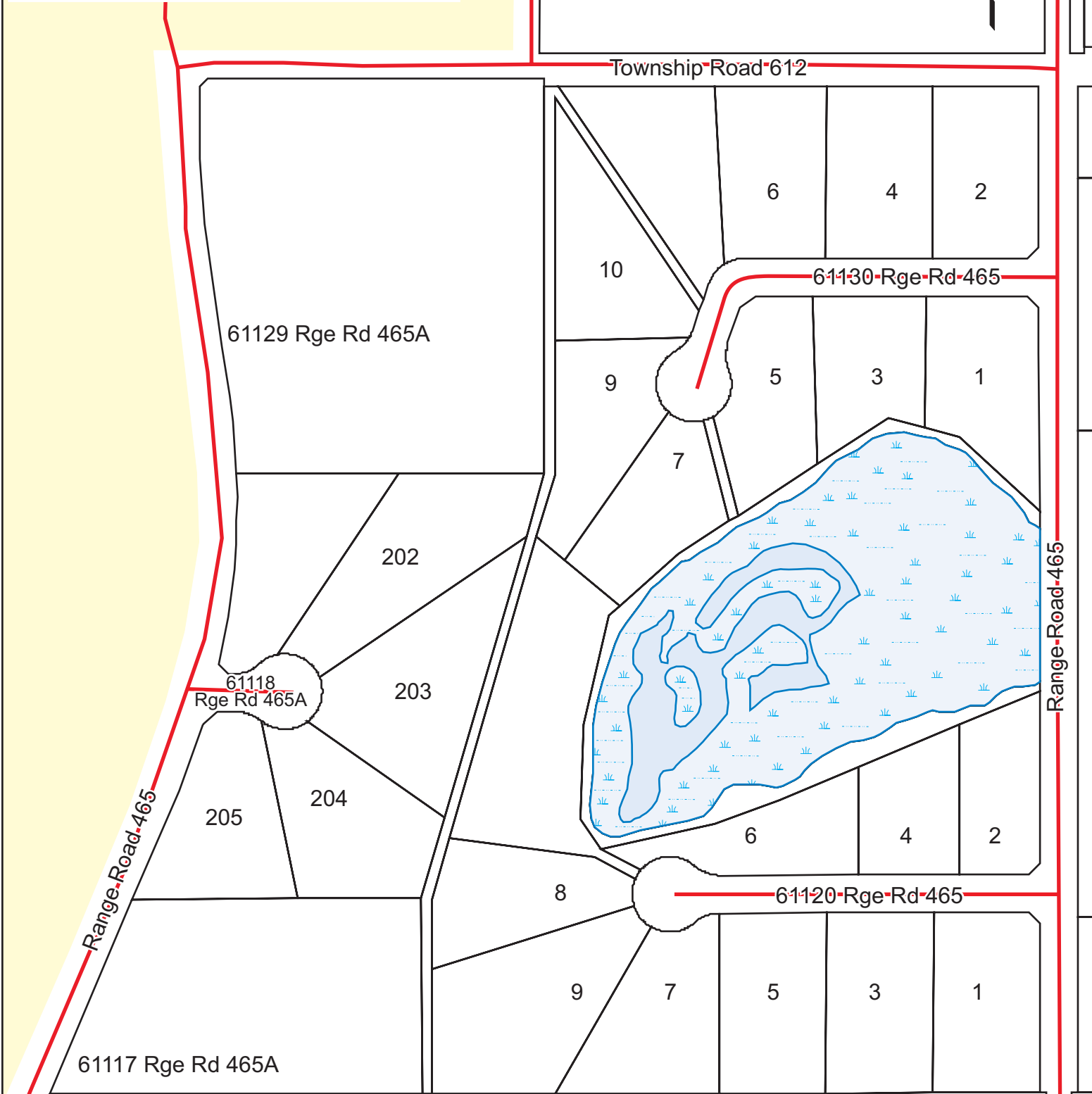
Disclaimer
This map should not be used for navigational, tracking or any other purpose requiring exacting measurement of distance or direction or precision in the depiction of geographic features. This map document is made available by the Municipal District of Bonnyville No. 87 is not a legally recorded map nor survey and are not intended to be used as such. This map document was created as part of a Geographic Information System (GIS) that compiles records, information, and data from various city, county, province and federal sources. The source data may contain errors.



Moose Lake



ELK HAVEN SUBDIVISION



DISCLAIMER
This map should not be used for navigational, tracking or any other purpose requiring exacting measurement of distance or direction or precision in the depiction of geographic features. This map document is made available by the Municipal District of Bonnyville No. 87 is not a legally recorded map nor survey and are not intended to be used as such. This map document was created as part of a Geographic Information System (GIS) that compiles records, information, and data from various city, county, province and federal sources. The source data may contain errors.

MUNICIPAL DISTRICT
BONNYVILLE NO. 87

Highway 660

2

4

6

8

10

12

14

16

18

20

22

24

61307 Rge Rd 470

Spruce Ave

3

7

9

11

3

17

21

25

14

12

10

5

7

Pine Drive

61303 Rge Rd 470

19

17

15

13

11

9

EVERGREEN ESTATES



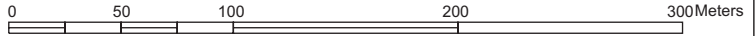
MUNICIPAL DISTRICT
BONNYVILLE NO. 87

Disclaimer

This map should not be used for navigational, tracking or any other purpose requiring exacting measurement of distance or direction or precision in the depiction of geographic features. This map document is made available by the Municipal District of Bonnyville No. 87 is not a legally recorded map nor survey and are not intended to be used as such. This map document was created as part of a Geographic Information System (GIS) that compiles records, information, and data from various city, county, province and federal sources. The source data may contain errors.

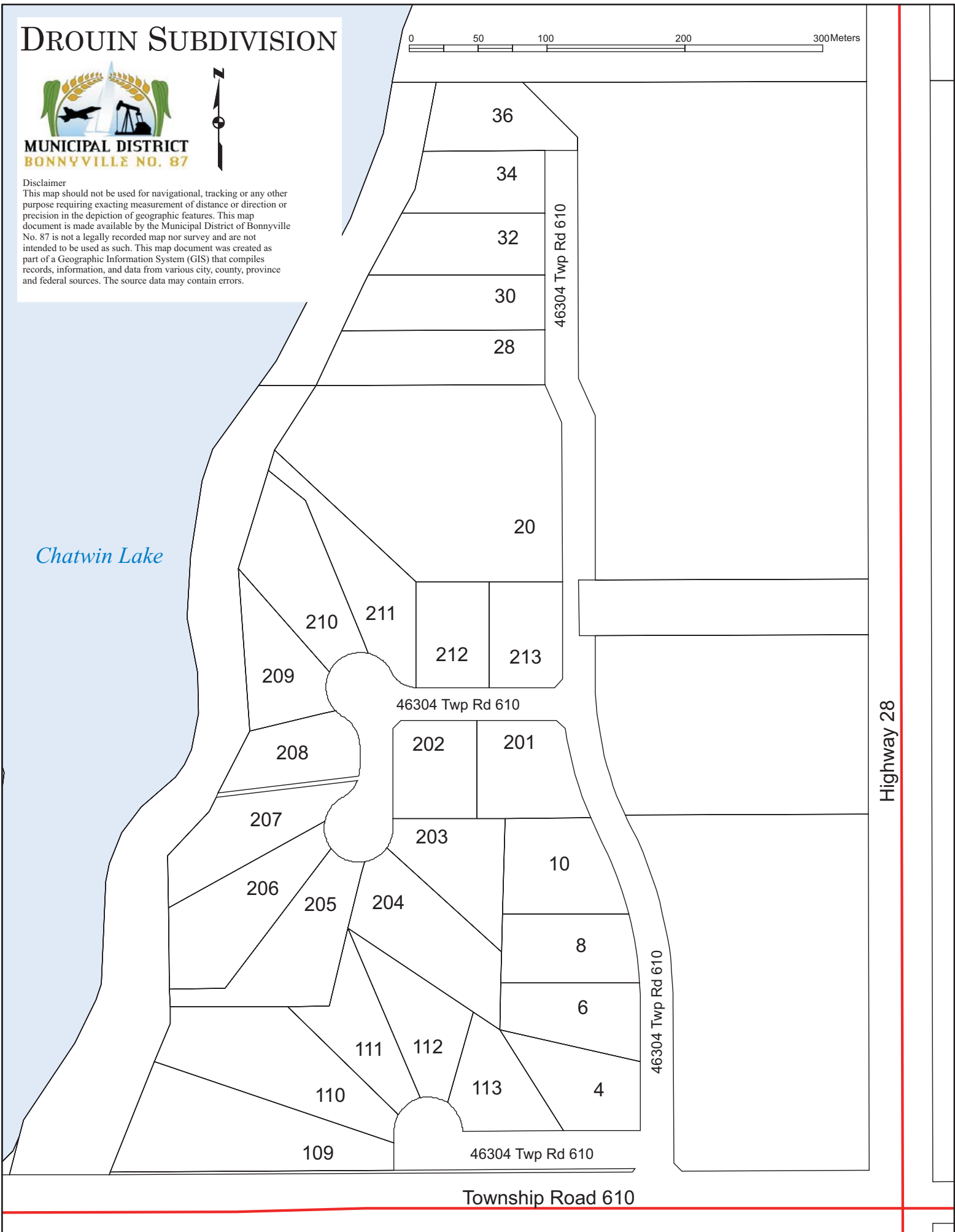


DROUIN SUBDIVISION



Disclaimer
This map should not be used for navigational, tracking or any other purpose requiring exacting measurement of distance or direction or precision in the depiction of geographic features. This map document is made available by the Municipal District of Bonnyville No. 87 is not a legally recorded map nor survey and are not intended to be used as such. This map document was created as part of a Geographic Information System (GIS) that compiles records, information, and data from various city, county, province and federal sources. The source data may contain errors.

Chatwin Lake

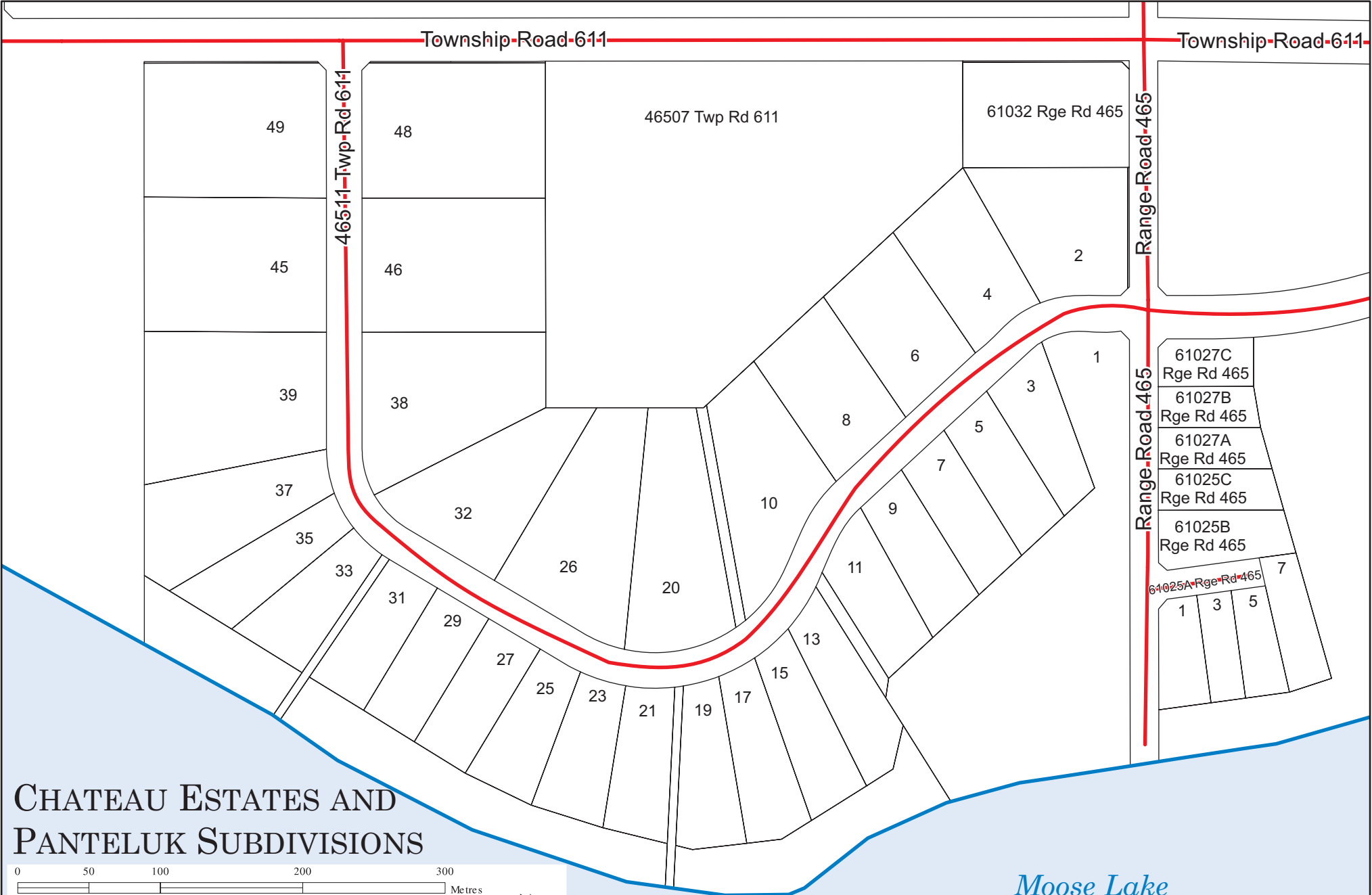


Township Road 610

Highway 28

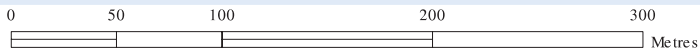
Township-Road-611

Township-Road-611



61027C	Rge Rd 465		
61027B	Rge Rd 465		
61027A	Rge Rd 465		
61025C	Rge Rd 465		
61025B	Rge Rd 465		
61025A	Rge Rd 465		
1	3	5	7

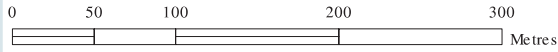
CHATEAU ESTATES AND PANTELUK SUBDIVISIONS



Disclaimer
 This map should not be used for navigational, tracking or any other purpose requiring exacting measurement of distance or direction or precision in the depiction of geographic features. This map document is made available by the Municipal District of Bonnyville No. 87 is not a legally recorded map nor survey and are not intended to be used as such. This map document was created as part of a Geographic Information System (GIS) that compiles records, information, and data from various city, county, province and federal sources. The source data may contain errors.

Moose Lake

BIRCH GROVE AND EAGLE'S NEST SUBDIVISIONS



**MUNICIPAL DISTRICT
BONNYVILLE NO. 87**

Disclaimer
This map should not be used for navigational, tracking or any other purpose requiring exacting measurement of distance or direction or precision in the depiction of geographic features. This map document is made available by the Municipal District of Bonnyville No. 87 is not a legally recorded map nor survey and are not intended to be used as such. This map document was created as part of a Geographic Information System (GIS) that compiles records, information, and data from various city, county, province and federal sources. The source data may contain errors.

Moose Lake

